

Britain's leading magazine for architectural products, technology and trends

ARCHITECTURE

FEBRUARY/MARCH 2023 | £8.95

M A G A Z I N E

GLASS & GLAZING

PRODUCTS AND PROJECTS
WITH INNOVATIVE SOLUTIONS

CITIZENS DESIGN BUREAU

ARCHITECT KATY MARKS IS DRIVEN
BY COMMUNITY AND CRAFT

COLLABORATION IN DESIGN

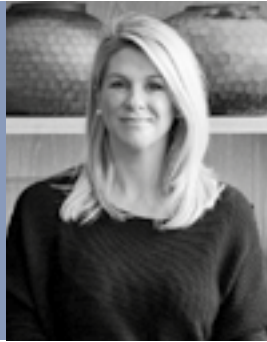
THE INTERSECTION OF ARCHITECTURE AND INTERIOR DESIGN

ARCHITECT
@WORK
UNITED KINGDOM

THE EXCLUSIVE TRADE EVENT FOR
ARCHITECTS AND INTERIOR DESIGNERS
22-23 March 2023, The Truman Brewery
www.architect-at-work.co.uk

JEN BERNARD, FOUNDER & MANAGING DIRECTOR, BERNARD INTERIORS

Jen has worked in the architecture and interior design industry since graduating from Edinburgh College of Art in Interior Architecture. She founded Bernard Interiors in 2008 and has earned an enviable reputation for designing exceptional interiors with a tailored approach. Bernard Interiors creates elegant living spaces for the private properties of high-net-worth individuals and designs interiors for luxurious retirement villages. Jen's ability to put clients at ease, along with her infectious energy, creativity, and effortless attention to detail is the driving force behind the success of Bernard Interiors.



JEN BERNARD, BERNARD INTERIORS

When we are working on a new development or an extensive remodel, both on commercial and residential properties, we will usually work closely with an architect and we are very comfortable in this world. I studied Interior Architecture in Edinburgh before founding Bernard Interiors in 2008 so the relationship between architecture and interior design is so important to me and my team. Our studio is a member of the British Institute of Interior Design, which promotes professionalism in interior design and is affiliated with the Royal Institute of British Architects, as well as the Construction Industry Council.

Collaborating with architects allows us to complement each other's expertise and keep the clients' vision and preferences at the forefront of our collective work. Coming together on a project encourages an exchange of ideas that produces cohesive designs and ensures the priorities are reflected in both the architectural structure and the interior and special decisions.

Being closely involved in the initial architectural pre-planning meetings allows us to share knowledge and ideas and discuss challenges and opportunities, creating solutions together. The key is to work from the inside out. It's important that this collaboration continues throughout the project, to ensure that all details are considered as the design process evolves. One of our recent residential projects is a Victorian mansion in Surrey. The client purchased the property and although they wanted a contemporary interior, they also felt strongly about being sympathetic to the history of the property and its period features. We added an extension onto the ground floor with a large glass atrium and we replicated the marble columns from the original structure of the house into the extension so that the design was complemented throughout. We worked very closely with the architect on material curation and FF&E (furniture, fixtures, and equipment) to create a traditional and elegant style, whilst delivering the contemporary and minimalist interior design that the client was looking for.

Working with our architectural colleagues to create a masterplan for each project, we pay close attention to how the space will look and function day-to-day. The use of CGI helps us to communicate this to our clients. Whilst we often liaise with architects from early project conception, our primary focus is always on how we can have an impact on the aesthetic appeal and functionality of a

property. We produce full detailed drawing packages to be issued to contractors, highlighting key features we have designed such as elegant plasterwork detailing and intricate stonework. These elements, alongside cohesive colour schemes and refined furniture specifications come together to create interiors that complement the architecture of a property, adding value both commercially and personally.

With a variety of projects live at any moment, from large historic mansions within luxury retirement villages to magnificent private homes in the UK and abroad, it is important that we foster positive relationships with architects in the early stages of any project. This collaboration helps us both support one another in achieving both our own goals and our clients'.

www.bernardinteriors.co.uk
IG: @bernardinteriors



Drawing Room in a Victorian Mansion by Bernard Interiors



Landing in a Victorian Mansion by Bernard Interiors